

Why Do Specialist Managers Run Diversified Firms?

Ilona Babenko, Claudia Custodio, and Beatriz Mariano

Arizona State University and London School of Economics

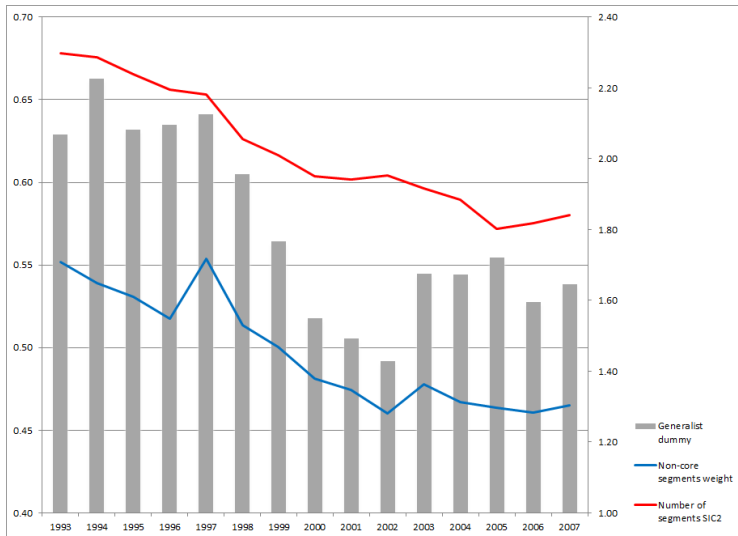
4th International Conference in Economics and Finance
May 28, 2014

Introduction

- ▶ Growing evidence on importance of manager characteristics for firm policies
 - ▶ Bertrand and Schoar (2003), Kaplan, Klebanov, and Sorensen (2012), Graham, Li, and Qiu (2013)
- ▶ Overall, increasing demand for managers with general skills that are transferable across firms and industries (Murphy and Zabojnik (2004)).
 - ▶ How to define a specialist and generalist
- ▶ **Research question:** What type of managers should run conglomerate firms?

Look at Data Trends

- ▶ Approximately 43% of large conglomerates are run by specialist managers (35% in 1994, and over 47% in 2006)



Why So Many Specialists? Possible Explanations

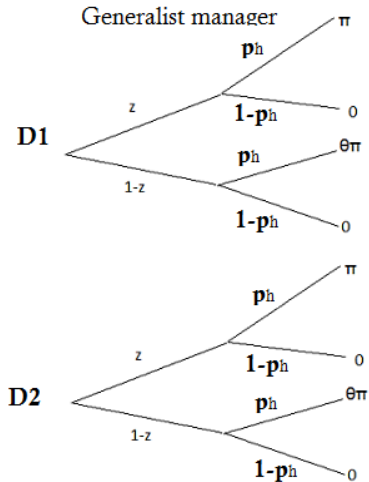
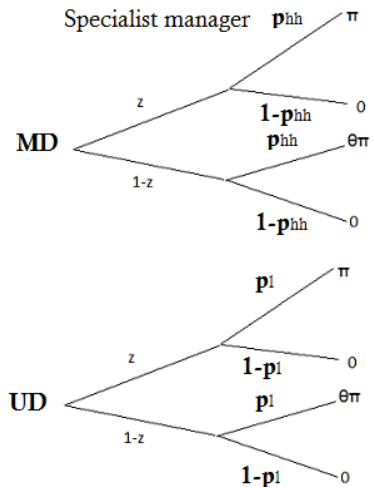
- ▶ **Governance failure or managerial entrenchment**
 - ▶ Most diversified firms probably started as standalones, were run by specialists, who later captured boards
 - ▶ If this is the case, conglomerates run by specialists should have worse performance.
- ▶ **Managerial talent is scarce, supply-side factors dictate firms' choices**
 - ▶ Unlikely to explain as managers at large become more generalists
- ▶ **Specialists require smaller compensation**
 - ▶ Custodio, Ferreira, and Matos (2013) document a generalist premium of 19%
- ▶ **Specialists are better at running core lines of business, firm characteristics change over time**
 - ▶ Indeed, firms are becoming more focused

Model Overview

- ▶ A conglomerate with 2 divisions, manager has 2 units of capital to invest (1 in each division, or 2 and 0)
- ▶ A division can be **productive** (cash flow of π or 0) or **unproductive** (cash flow of $\theta\pi$ or 0).
 - ▶ Productivity is perfectly observable by manager, but not by shareholders.
- ▶ Probability of any division to be productive is z .
- ▶ Manager can exert effort to improve the chance of getting high cash flow at a cost c .
- ▶ Manager is risk-neutral and can be a **generalist** or a **specialist**.
 - ▶ Generalist equally good at running projects in both divisions
 - ▶ Specialist is better at running projects in well-matched division.

$$p_{hh} > p_h > p_l > p_{ll}$$

Model Chart



Principal Problem

- ▶ The principal has to decide 1) what kind of manager to appoint, 2) which compensation contract to give to the manager
- ▶ The principal maximizes expected profit of the firm net of manager's compensation costs.
- ▶ Main tradeoffs:
 - ▶ Specialist is more efficient at running core line of business, but less efficient at running other segments
 - ▶ Generalist is unbiased in his capital allocation problem, always allocates capital to most productive division
 - ▶ Incentivizing manager to apply effort depends on the type of the manager, hence different compensation costs

Optimal Contract

- ▶ We build on model of Laux (2001), who shows that it is more effective to compensate the manager based on success in multiple projects
- ▶ Since possible combined cash flow realizations are 2π , $2\theta\pi$, π , $\theta\pi$, 0 , the contract can have payments to the manager of $w_{2\pi}$, $w_{2\theta\pi}$, w_{π} , $w_{\theta\pi}$, w_0 .
- ▶ It is clear that $w_0 = 0$, and generalizing result of Laux (2001), we show $w_{\pi} = w_{\theta\pi} = 0$

Generalist Manager

- ▶ No need to solve capital allocation problem, since generalist is unbiased
- ▶ If at least one division is productive, generalist invests in this division. In order to apply effort, should have

$$p_h^2 w_{2\pi} - 2c \geq p_{ll}^2 w_{2\pi}$$

- ▶ If both divisions are unproductive, incentive compatibility constraint is

$$p_h^2 w_{2\theta\pi} - 2c \geq p_{ll}^2 w_{2\theta\pi}$$

- ▶ Thus compensation of the manager does not depend on productivity, only on whether projects are successful or not

$$w_{2\pi} = w_{2\theta\pi} = \frac{2c}{p_h^2 - p_{ll}^2}$$

Specialist Manager

- ▶ Providing incentives to exert effort requires a more sophisticated contract (5 IC constraints)
- ▶ Suppose, e.g., we give to specialist contract with $w_{2\pi} = w_{2\theta\pi}$. In which division will he want to invest capital?
 - ▶ Always in well-matched division (MD) since probability of success is higher there
 - ▶ But this division can be unproductive, so not always optimal
- ▶ Two major types of contract for the specialist can be chosen by the principal:
 - ▶ A contract that offsets specialist's bias for the well-matched division: Very expensive, paid more than generalist!
 - ▶ Contract that does not offset bias, specialist invests in whichever division he prefers: Cheaper than generalist!

Best Manager in a Firm

Proposition If $\theta > \bar{\theta}^S$ or $\theta < \underline{\theta}^S$, then a specialist manager is preferred by the conglomerate.

- ▶ Intuition for case $\theta > \bar{\theta}^S$.
 - ▶ Productivity of divisions is similar, let specialist invest always in the well-matched division, his contract is very cheap
- ▶ Intuition for case $\theta < \underline{\theta}^S$.
 - ▶ When a division productivity turns out to be low, can forget about trying to induce effort, this removes one of the IC-constraints for the specialist, and his contract can again be cheap

Empirical Predictions

- Prediction 1** Firms that have either very low or very high dispersion in investment opportunities and also smaller firms are more likely to appoint specialist managers.
- Prediction 2** If firms with very low or very high dispersion in investment opportunities appoint generalists, they perform worse.
- Prediction 3** Firms run by specialists will be more focused.
- ▶ Two reasons: 1) Focused will profit more from appointing specialist 2) Firms run by specialists will become more focused over time since specialists will invest more in well-matched division
- Prediction 4** The generalist pay premium is higher in firms with high dispersion of investment opportunities.

Data

- ▶ Panel of conglomerate-CEO-years during 1993-2007 drawn from Execucomp and Compustat Segments Database (5,171).
- ▶ General ability index (GAI) is defined as in Custodio, Ferreira, and Matos (2013) using Boardex data

$$GAI = 0.27X_1 + 0.31X_2 + 0.31X_3 + 0.22X_4 + 0.15X_5$$

- ▶ X_1 is the number of different positions a CEO held during his career
- ▶ X_2 is the number of firms where a CEO has worked
- ▶ X_3 is the number of industries at 4-digit SIC level where a CEO worked
- ▶ X_4 is a dummy variable, equal to 1 if CEO held a CEO position in a different firm before
- ▶ X_5 is dummy if CEO has worked in multi-divisional firm before.

Differences Between Specialists and Generalists

	Generalists	Specialists	Diff.	t-stat
Number of segments	3.136	2.917	0.219	7.22***
Num of SIC2 segments	2.069	1.910	0.159	6.49***
1-Herfindahl	0.553	0.533	0.020	3.01***
Total entropy	0.249	0.237	0.012	3.71***
Related entropy	0.102	0.114	-0.012	-3.32***
Non-core weight	0.504	0.478	0.026	3.41***
Excess value	-0.098	-0.093	-0.005	-0.40
Sales	5156	2765	2391	13.29***
Tobin's q	1.789	1.799	-0.011	-0.38
ROA	0.139	0.142	-0.003	-1.27
Stock return	0.139	0.143	-0.003	-0.27
Total compensation (\$M)	5,539	3,014	2,524	11.84***
CEO tenure	7.61	8.44	-0.835	-3.89***
CEO age	57.7	55.5	2.191	10.83***
External hire	0.421	0.298	0.122	9.12***
MBA dummy	0.369	0.282	0.087	6.63***
Observations	2,927	2,244		

CEO Type – Conglomerate Matching

	(1)	(2)	(3)	(4)
Diversity	0.258*** [2.890]	0.196** [2.066]	0.200** [2.108]	0.156 [1.359]
Diversity squared	-0.147*** [-3.526]	-0.111** [-2.488]	-0.110** [-2.484]	-0.093* [-1.920]
Size		0.262*** [17.324]	0.261*** [17.518]	0.263*** [17.731]
Number of segments		0.027 [1.546]		
Number of segments (SIC2)			0.086*** [4.122]	
Total entropy				0.484** [2.390]
Related entropy				-0.565*** [-3.616]
Tobin's q		-0.020 [-1.037]	-0.015 [-0.776]	-0.018 [-0.932]
R&D		2.931*** [5.196]	2.987*** [5.293]	2.980*** [5.281]
CAPEX		-1.968***	-2.064***	-2.027***

Total Compensation, CEO Type, and Diversity

	(1)	(2)	(3)
Generalist dummy	0.613*** [12.483]	0.160*** [3.202]	0.163*** [3.272]
Diversity		-0.056 [-1.296]	-0.057 [-1.322]
Generalist dummy*Diversity		0.065*** [2.627]	0.064*** [2.614]
Number of segments			-0.021 [-0.973]
Size		0.495*** [26.977]	0.499*** [27.457]
External hire dummy		0.057 [1.373]	0.055 [1.310]
MBA dummy		0.069** [1.978]	0.069** [1.973]
CEO-chair dummy		0.173*** [3.522]	0.171*** [3.549]
Tobin's q		0.148*** [5.680]	0.147*** [5.669]

Conclusion

- ▶ We analyze the matching between CEO type and conglomerates.
- ▶ Interestingly, 43% of conglomerates are run by specialists, and the fraction increases overtime.
- ▶ Conglomerates are also becoming increasingly more focused.
- ▶ The model suggests that specialists are optimal for smaller, more focused conglomerates, and the ones that either have very diverse investment opportunities or very similar.
- ▶ Empirical results largely lend support to optimal matching, rather than corporate governance failure.